

WYRESTORM CONTROL SOLUTION

ENA-001-010



KEY FEATURES

- Out of the box, cross-platform control solution compatible with any Internet-enabled product from any manufacturer, with any browser, any operating system and screen size.
- Enables control of an unlimited number of user devices with no license fees and a one-time, low cost
- Single Update Technology ensures A/V systems are up to date, instantly updating every connected device at the touch of a button.
- No programming software and elegant, pre-configured templates makes integration with WyreStorm (and other) products simple.
- Achieves a Total WyreStorm A/V Distribution and Control Solution complete with end-to-end video, audio and control via a single cable per zone.

WyreStorm Enado redefines integrators' ability to control AV distribution systems by combining powerful hardware and intuitive, cross-platform software to create an end to end AV distribution and control system that is always on, updated and accessible.

The system can be programmed via a simple but advanced web browser application and is designed to offer maximum control flexibility eliminating the requirement for proprietary applications. The powerful software can run on any client device that offers a web interface. The controller is ideal for both professional and residential control.

ADDITIONAL FEATURES & BENEFITS

- Sleek, 1RU design allows for installation flexibility in a rack, cabinet or on a shelf.
- Extensive I/O to control devices through multiple IR, RS232 serial, IP, contacts and relays.
- Instantaneous, intuitive control from a smart phone, tablet, TV, PC or MAC browser.
- Full remote access, enables control and programming from any web enabled device including smart phones, tablets, Smart TVs, PCs and Macs.
- Advanced processor delivers exceptional performance and control of connected devices including video, audio, lighting and more.

IN THE BOX

1 x WyreStorm Enado Controller
1 x Mounting Brackets (Pair)

8 x Dual plug IR emitters
8 x 3.5mm to 3.5mm IR cable

4 x RS232 male to female cable
2 x Sensor I/O phoenix connectors

SPECIFICATIONS

NETWORK

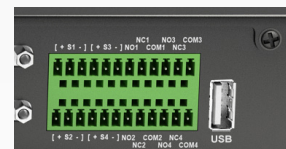
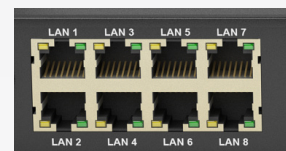
Ethernet Ports + Speed	8x10/100 (8023AB)
USB 2.0	1

CONTROL

Sensor Inputs	4
Sensor Outputs	4
IR Ports (3.5mm)	16
IR Learner	2 1 x 3.5mm (rear) + Learning window (front)
IR Blaster (front)	Yes
RS-232 Serial	4 DB9 Male

GENERAL

Operating Temperature Range	5°C ~ 35°C / 41°F ~ 95°F
Storage Temperature	-20°C ~ 60°C / -4°F ~ 140°F
Operating Humidity Range	5 to 90 % RH (no condensation)
Dimensions (HxWxD)	42.3mm x 440mm x 261.6mm / 1.66" x 17.3" x 10.3"
Weight Approx.	3.74Kg / 8.24lbs (without accessories)
Power Supply Input	100-240V/AC
Power Consumption	5 Watts
IR Output Min/Max IR Frequency	10k ~ 120k
USB type	USB 2.0
Ethernet	10/100
Sensor I/O	Input requires 12V

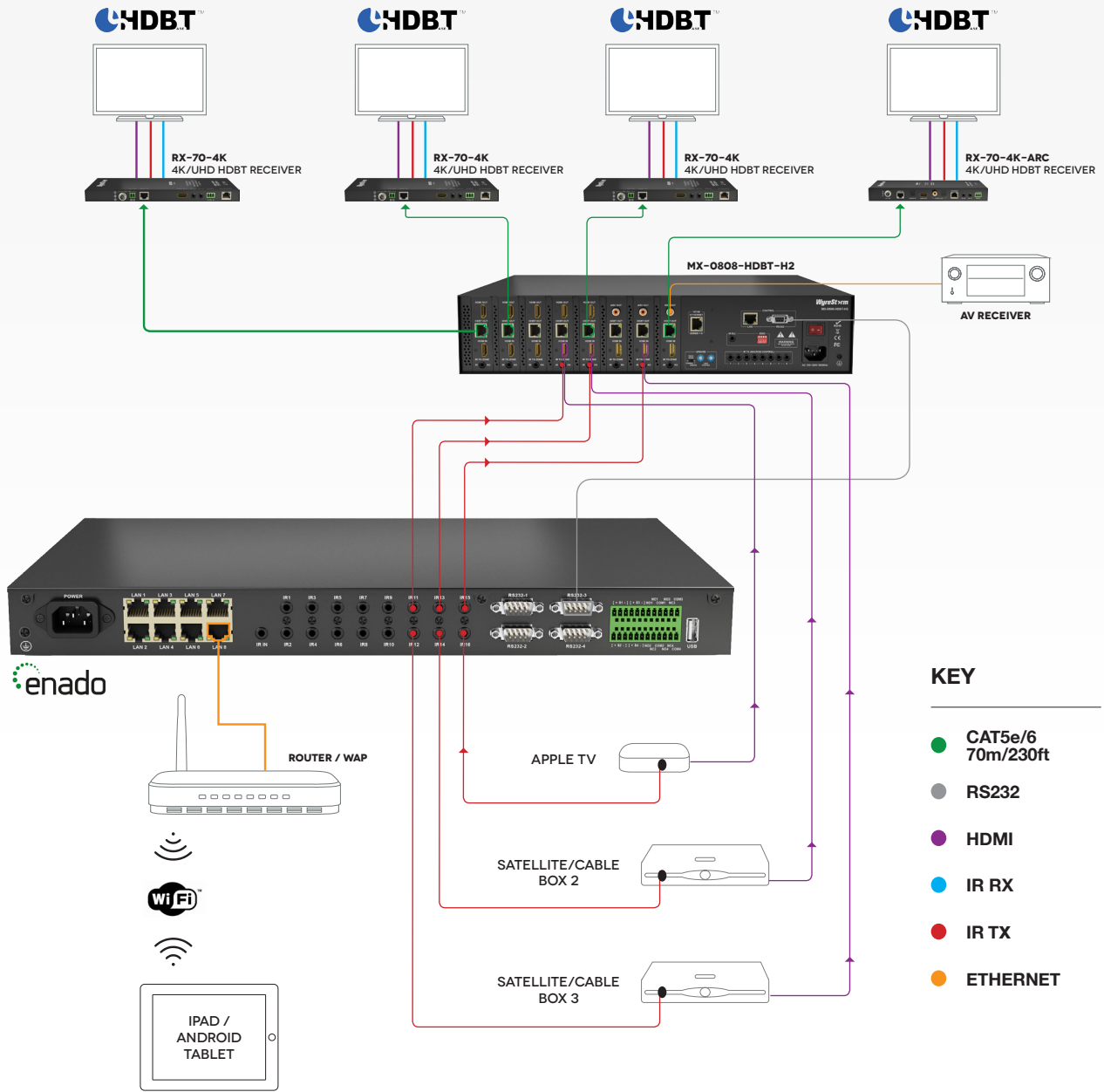


For additional product information, visit wyrestorm.com

For technical support, contact: US: +1 901 384 3575 EMEA: +44 (0) 1793 230 343



ENADO TYPICAL APPLICATIONS



KEY

- CAT5e/6
70m/230ft
- RS232
- HDMI
- IR RX
- IR TX
- ETHERNET

KEY

- CAT5e/6
70m/230ft
- IR RX
- RS232
- IR TX
- HDMI
- ETHERNET